



13

IRON ORE

Iron ores are rocks that contain metallic iron and vary in color. It usually rich in iron oxides and serves as a common raw materials of steel manufacturing.



14

LUBRICANT

Lubricant or lube is a oil form substance to reduce the friction of two or more moving parts and to increase physical moment efficiency. Lubricant also function as a heat distributor to aid in dispersing heat away from moving parts.

Testing required including of kinematic viscosity, flash point, density, fatty acid composition, sulphur etc.



15

CALIBRATION & MAINTENANCE

We are proficient in performing calibration and maintenance of Laminar Flow, Bio Safety Cabinet (Class II), and Autoclave in your microbiology laboratory.



2015 | JOHOR BAHRU
6,500 sqft.



2014 | PERAI
12,000 sqft.



2011 | SHAH ALAM
6,500 sqft.



2006 | 1st Lab, PERAI
800 sqft.



MS ISO/IEC 17025
TESTING
SAMM NO. 334
SAMM NO. 564
SAMM NO. 752



The Compliance Catalyst

MY CO2 SDN BHD (744438-M)
MY CO2 (PG) SDN BHD (1256244-P) **SAMM No. 384**
16, Lengkok Kikik 1, Taman Inderawasih,
13600 Perai, Penang, Malaysia.
T: +604-380 8282 F: +604-380 8280

MY CO2 CERTIFICATION SDN BHD (1197752-X)
MY CO2 (KL) SDN BHD (1155142-M) **SAMM No. 564**
40, Jalan Sepadu B25/B,
40400 Shah Alam, Selangor, Malaysia.
T: +603-5122 3366 F: +603-5122 3386

MY CO2 (JB) SDN BHD (1155302-A) **SAMM No. 752**
15, Jalan Molek 1/8, Taman Molek,
81100 Johor Bahru, Johor, Malaysia.
T: +607-355 8811 F: +607-355 9808

enquiry@myco2.com.my
www.myco2.com.my



WHEN YOU CARE ABOUT THE ENVIRONMENT

Statutory Compliance

- ISO 14001 •
- OHSAS 18001 •
- INDUSTRIAL •

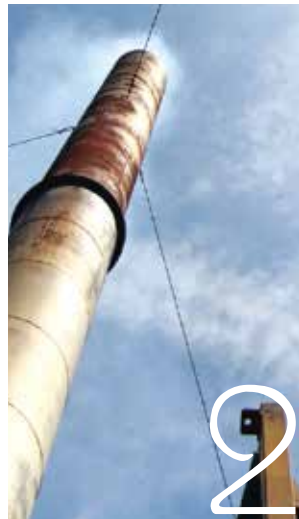




WATER QUALITY

Wastewater & Waste Water Characteristic Study (WWCS). BOD, COD, Oil & Grease, pH, Suspended solids and etc. Environment Quality Act (Industrial Effluents) Regulation 2009 and EQA (Sewage) Regulations 2009.

1



ENVIRONMENTAL POLLUTANT MONITORING

Compliance to statutory requirements. Dust, NOx, SOx, CO, CO2, Methane Gas, Halogens, heavy metal particulates and etc.

Environmental Quality Act (Clean Air) Regulations 2014.

2



BOUNDARY NOISE

Boundary noise is to measure the noise exposure to neighbouring premises.

Environmental Quality Act 1974, Part IV, Prohibition and Control of Pollution, Regulation 23, Restriction on noise pollutions.

3



ENVIRONMENTAL IMPACT ASSESSMENT

EIA is a study to identify, predict, and evaluate various impacts on the environment of a project. EIA study able to aid mitigation of various pollutions from Particles TSP, PM10, PM2.5, Noise, and Water Quality.

In Malaysia, EIA is required under section 34A, Environmental Quality Act, 1974 (Amendment, 1985)

4



NOISE EXPOSURE MONITORING

To identify area and machinery noise level and noise exposure towards an individual.

Initial Noise Exposure Monitoring, Additional Noise Exposure Monitoring, Positive Noise Exposure Monitoring.

DOSH competency number:
HQ/12/PEB/00/119
Factory & Machinery (Noise Exposure) Regulation 1989

5



PERSONAL EXPOSURE MONITORING

To evaluate the degree of chemical exposure towards employees Respirable Dust, Heavy Metals, Volatile Organic Compounds and etc.

DOSH competency number:
HQ/11/JHI/00/173

6



CHRA (CHEMICAL HEALTH RISK ASSESSMENT)

Identification of hazards posed by each chemical substance within the working space. Evaluate Exposure, Control Measures and Health Risk.

DOSH competency number:
HQ/11/ASS/00/294
HQ/17/ASS/00/00016
USECCH Regulation 2000

7



LEV (LOCAL EXHAUST VENTILATION)

To inspect, test and examine engineering control equipments such as: Fumehood, Spray Booth, Capture Hood System etc.

DOSH competency number:
HQ/11/JHII/00/180
Reference to American Conference of Governmental Industrial Hygienists (ACGIH) Standard.

8



REACH

Registration, Evaluation, Authorisation and Restriction of Chemicals, into EU. SVHC (Substance of very High Concern) candidate list Contains 163 substances as of 15th June 2015

Regulation (EC) No 1907 / 2006

RoHS

Compliant component is tested for the presence of: Lead (Pb), Cadmium (Cd), Mercury (Hg), Hexavalent Chromium, Polybrominated biphenyls (PBB), Polybrominated diphenylethers (PBDE)

Adopted by European Union, February 2003, Directive 2002/95/EC

9



SCHEDULED WASTES ANALYSIS

Chemical analysis to assist on the characteristic of scheduled wastes. Fully accredited and recognized by Department of Environment (DOE).

DOE compliance:
Environmental Quality (Scheduled Wastes) Regulations 2005.

10



FAILURE ANALYSIS

Failure analysis is the process of collecting and analyzing data to determine the cause of a failure.

Ionic information such as Fluoride, Chloride, Nitrite, Bromide, Nitrate, Phosphate, Sulfate, Magnesium, Lithium, Sodium, Potassium, calcium, and Ammonium and combination with the other failure analysis methodology (FTIR) to assist in isolation and identification of the potential root cause of a problem

Adopted by European Union, February 2003, Directive 2002/95/EC

11



TOY

Toys are usually associated with children where any object that can be used for play. Playing with toy is training the children for their psychosocial development. Good toy often state its hazard information such as "Small Parts, Not Suitable For Children Below 3". We conduct Toy Testing based on EN71 (Part 1,2,3), ISO8124 (Part 1,2,3), EN62115:2005, and MS1725:204 method.

12